

# FOR LEASE

2175 Avon Industrial  
Rochester Hills



Office/Light Industrial

Local Ownership and Management

## Features

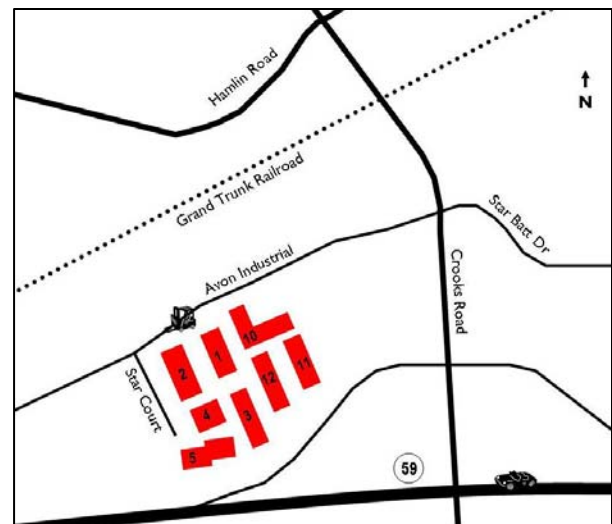
- 2,400 SF
- 683 SF Office
- 1 OHD
- 14' – 18' Clearance
- Newly Renovated Exterior & Landscaping
- Can Build Office to Suit
- Rochester Hills SmartZone

## Location

- Northwest corner of M-59 & Crooks
- Conveniently Located to M-59 & I-75

## Leasing

- Fast Occupancy
- Flexible Lease Terms
- Competitive Rates - \$4.95 gross / \$990/mo.



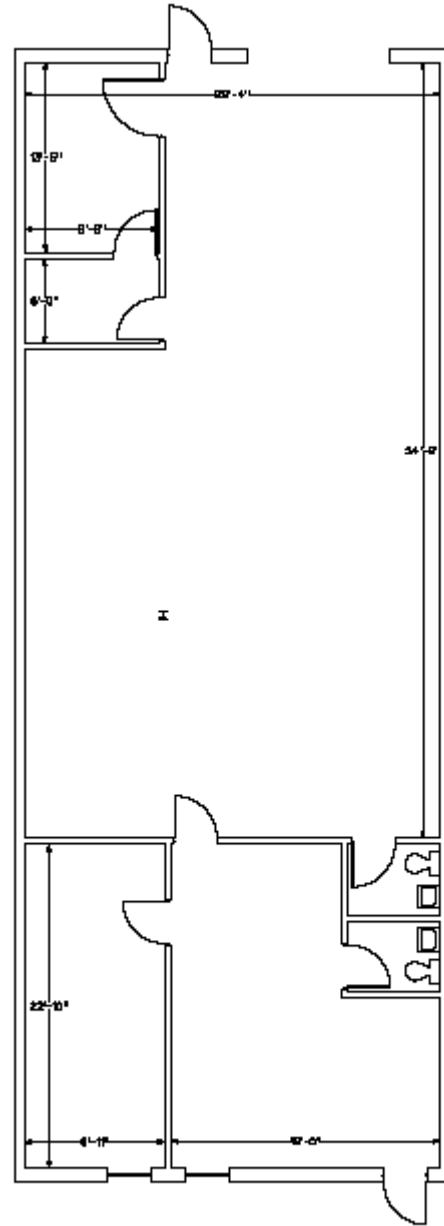
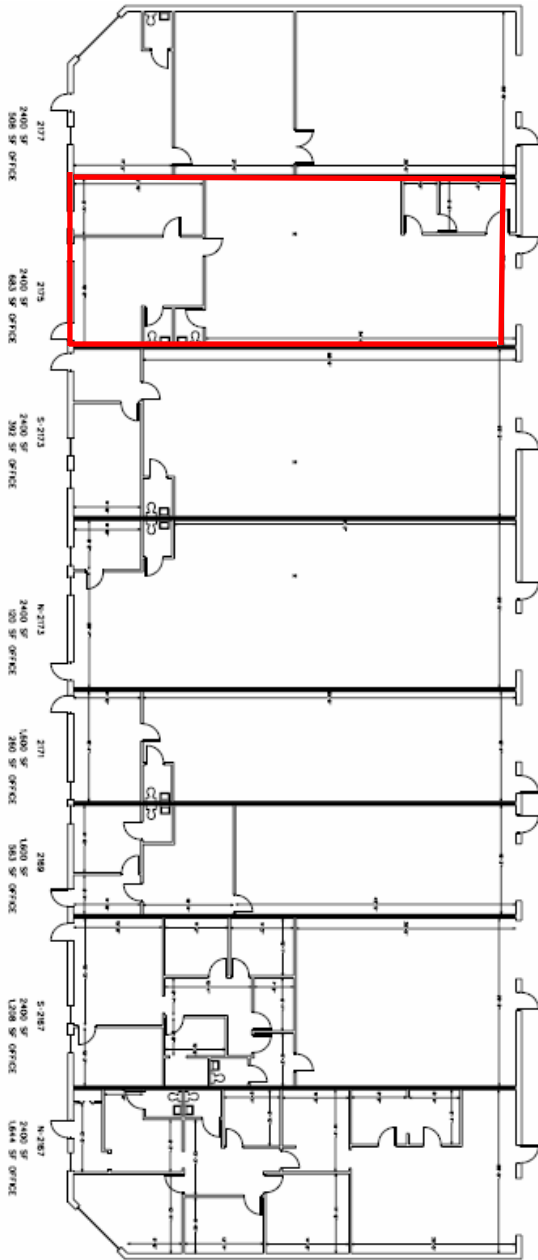
## Please contact:

Tyson Butts  
Corporate Leasing Manager  
248.331.0215  
tbutts@pa-cres.com



3000 Town Center  
Suite 2222  
Southfield, MI 48075  
248.331-0215  
248.358-5300 f  
www.zicorproperty.com

Information contained herein is believed to be accurate but is not warranted as to accuracy and may change or be updated without notice. Seller or landlord makes no representation as to the environmental condition of the property and recommends Purchaser's or Tenant's personal investigation.



2175  
2400 SF  
683 SF OFFICE



Building II