

FOR LEASE

362 Hilton
Ferndale



Office/Retail/Light Industrial

Local Ownership and Management

Features

- 2,424 SF Retail/Studio
- Multi-tenant Facility Renovated in 2006
- Beautifully-designed Layout with Epoxy Flooring, Exposed Ductwork, Built-in Bench Seating, Industrial Doors & More
- Willing to Modify Unit to Suit
- One Lavatory in Unit
- Choice of New Carpet or Tile
- Ample Parking

Location

- South of Nine Mile at the NE Corner of Camden & Hilton
- Conveniently Located to I-75, I-696 & Downtown Ferndale

Leasing

- Flexible Lease Terms
- Competitive Rates - \$14.50 gross
\$2,929/mo. + utilities



Please contact:

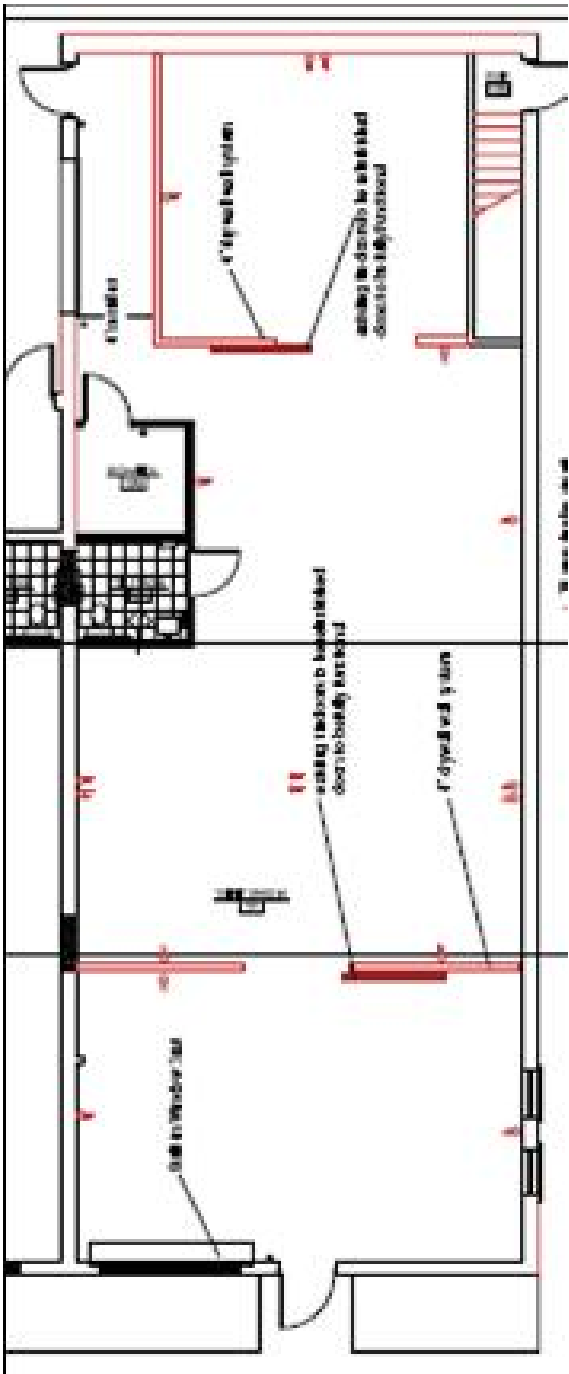
Tyson Butts
Corporate Leasing Manager
248.331.0215
tbutts@pa-cres.com



3000 Town Center
Suite 2222
Southfield, MI 48075
248.262.8000
248.262.8013 f
www.zicorproperty.com

Information contained herein is believed to be accurate but is not warranted as to accuracy and may change or be updated without notice. Seller or landlord makes no representation as to the environmental condition of the property and recommends Purchaser's or Tenant's personal investigation.

Floor Plan & Interior Photos



02/27/10

Tyson Butts
 248.331.0215
 tbutts@pa-cres.com

3000 Town Center, Suite 2222
 Southfield, MI 48075
 www.zicorproperty.com